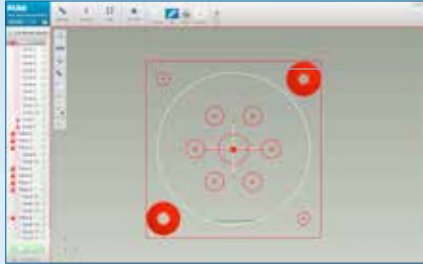


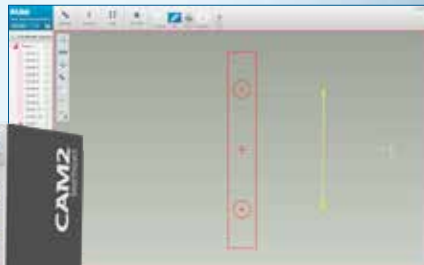
# FARO CAM2 SmartInspect

The measurement software  
for everyone



## NEW - Live on-screen 3D view of measurements

With the Live on screen view, users can see the results from their measurements shown graphically in projection plane views. The graphical view can also be rotated to show a 3D representation of all the measured features.



## NEW - On-screen dimensioning

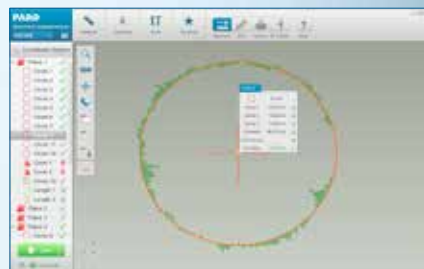
Interact directly with the graphical view to create dimensions and constructions needed to extract information that cannot be measured directly. Position the dimensions around the measurements to get the view as you need it.

## NEW - Whiskers and tolerances

Whiskers and tolerance graphics can be shown on individual measured features showing detailed error distribution with color that highlight the specific areas of part that are out of tolerance.

## NEW - Labels

Labels can be shown in the graphical view to provide immediate information about the measurement features without further user actions.



Engineered for simplicity, FARO CAM2 SmartInspect is the perfect software for any user that is looking for non CAD-based inspection. The software design is simple and intuitive. Even users without any 3D metrology background can be easily trained.

FARO CAM2 SmartInspect features a live graphical view or a picture-based measurement guidance view, as a means to support the measurement process. Interactions with the live view provide an intuitive platform to create the necessary dimensions and constructions that cannot be measured directly.

## Most Common Applications

**Automotive:** Tool Building & Certification, Alignment, Part Inspection

**Molding/Tool & Die:** Mold and Die Inspection, Prototype Part Scanning

**Metal Fabrication:** OMI, First Article Inspection, Periodic Part Inspection

**Aerospace:** Alignment, Tooling & Mold Certification, Part Inspection

## Benefits

- ▶ **Interactivity:** Live feedback displaying results in a graphical 3D view, and immediate recalculation of results.
- ▶ **Consistency:** Image-based support for measurement guidance, and live error display during measurements.
- ▶ **Flexibility:** Immediate measurement, and one-click repeat part measurement.
- ▶ **Reliability:** NIST / PTB certification

## Additional Features

### Smart Suggestion Box

Suggestions are always available to the user on what he can do next with the objects selected. This allows new users to get tips and hints on the capabilities that are available to them while expert users can make use of this feature to speed up their workflow.

### Repeated Part Measurement

Once a part has been measured once, the measurement can be repeated as the result of a single button click. Using the "Image View" mode, the second measurement can be performed by any user with a single click.

### QuickTool Import

The QuickTools functionality permits users to import and use the QuickTools programs generated from the FARO CAM2 Measure 10 software.

### Picture Support for Guided Repeat Measurement

As with its predecessor FARO CAM2 Gage software, FARO CAM2 SmartInspect now offers the ability to associate real-part pictures where markers can be added to provide clear visual guidance to measurement operators. This enables measurement of a part once a routine has been defined.

## Capabilities

### Measurement

- Seamless connection to FARO Gage and FaroArm devices
- Direct measurement mode
- Online programming mode always on
- Easily align to part
- Live feedback during measurement
- Guided Geometry Measurement

### Programming

- Record steps for a part program (online/offline)
- Play steps in a measurement program
- Integrated programming module

### Alignments

- Coordinate system
- 3.2.1
- Three-feature

### Nominals

- Create nominal features by entering values

### Reporting

- Versatile export formats
- Export to HTML, text, Microsoft® Excel, PDF

### Software Version

Basic: All functionality with images

Pro version: An extended version with all functionality, in addition of 3D viewer and on screen dimensioning

## Specifications

**Platform:** Windows® XP • Windows® 7

**Languages:** Chinese, English, French, German, Italian, Japanese, Polish, Portuguese, Russian, Spanish, Turkish

